



Stock Code 688480

# SES ENVIRONMENTAL PROTECTION PTY LTD.

*SEP INDUSTRIAL  
SOLUTIONS*

**SES ENVIRONMENTAL PROTECTION PTY LTD.**

 Add: West Australia, Collins st. 135B, Piccadilly  
 E-mail: [sales@sep-water.com](mailto:sales@sep-water.com)





*Protect the ecological environment as our eyes*

*Treat the ecological environment as our lives*

# CONTENT LIST

<b>PRODUCT</b>	<b>01</b>
.....	
<b>OVERSEAS PROJECTS</b>	<b>07</b>
.....	
<b>MAIN CUSTOMERS</b>	<b>08</b>
.....	

# Product<sup>+</sup> Chemical agent

## Scale inhibitor

### • SEP-5136 Scale inhibitor

5136 is a highly effective multi-functional scale inhibitor that can be applied to reverse osmosis (RO), nanofiltration (NF), and electrodialysis (EDR) systems. It can effectively prevent the deposition and fouling of various scaling substances, especially calcium sulfate, on the membrane surface.

### • SEP-0108 Scale inhibitor

0108 is a highly effective multi-functional scale inhibitor. This product is a double concentrate and can be applied to reverse osmosis (RO), nanofiltration (NF), and electrodialysis (EDR) systems. It can effectively prevent various scaling substances, especially silicon (Si), from depositing and fouling on membrane surfaces.

### • SEP-1834 Scale inhibitor

1834 is a highly efficient multi-functional phosphorus-free scale inhibitor with excellent scale inhibition performance and low dosage. The product is a fourfold concentrate. It can be applied to reverse osmosis (RO), nanofiltration (NF) and electrodialysis (EDR) systems.



## Water treatment chemicals

### • Biological Agents 002(S-002)

Biologics (Biologics S-002) is a complex ligand water treatment agent for deep purification of multiple metal ions, developed jointly by the Institute of Environment, School of Metallurgy and Environment, Central South

University and SES Environmental Protection Co., LTD. It addresses the current drawback that chemical agents are difficult to deeply purify multiple metal ions simultaneously.

### • Biological Agents 003(S-003)

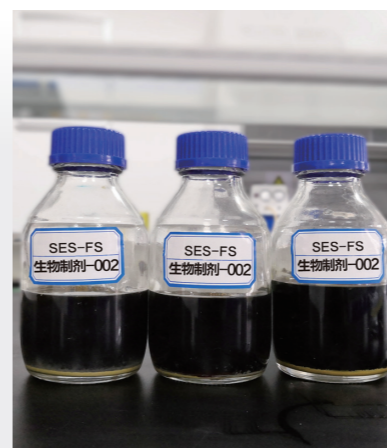
Heavy metal wastewater is treated through the synergy of multiple groups of biological agents to form stable heavy metal complexes. The pH value is adjusted with alkali for hydrolysis reaction. Since the biological agents also have efficient flocculation effect, when the

heavy metal complexes hydrolyze to form particles, they quickly flocculate to form micelles, achieving simultaneous efficient purification of multiple heavy metal ions (arsenic, cadmium, chromium, lead, mercury, copper, zinc, etc.)

### • Beneficiation reagents

SEP 479 is a multifunctional antiscalant designed to inhibit complex scales formed in cyanide gold leaching and recovery processes. 479 is a very stable product and

highly effective under high alkaline conditions and long residence times.



## Product<sup>+</sup> Chemical agent

### Cleaning agent and coagulat

- **SEP-0560 Cleaning agent**

0560 is a highly effective multi-functional cleaning agent for removing inorganic scaling substances and

iron deposits, and can be used in reverse osmosis (RO), nanofiltration (NF), and ultrafiltration (UF) systems.

- **SEP-0561 cleaning agent**

0561 is a broad-spectrum, highly effective multi-functional membrane cleaning agent.

- **SEP-0562 Cleaning agent**

0562 is a membrane-specific cleaning agent for acidic insoluble scale.

- **WT-301 coagulant PAC**

Coagulation is the process in which chemicals are added during water treatment to cause impurities to coagulate and flocculate. Coagulant PAC, also known as polyaluminium chloride, is a substance that binds and aggregates colloidal microparticles in water during the water treatment process.

- **WT-302 flocculant PAM**

Flocculant PAM is a water-soluble high-molecular polymer, also known as polyacrylamide. When used in combination with coagulants, it mainly acts on the surface of suspended solids through sweeping, bridging, etc., significantly improving coagulation and flocculation effects.



## Product<sup>+</sup> Membrane Component

### Reverse Osmosis Membrane Components

- **RO Membrane Component**

The RO membrane component Helixfil series, which features a new low differential pressure membrane, providing a low-energy product with anti-fouling characteristics, suitable for purifying industrial water.

- **Zero Discharge Series**

The Zero Discharge Series is designed for high anti-pollution and high pressure difference conditions, with variants offering exceptional anti-fouling properties, high-pressure RO for superior salt rejection, and ultra-high-pressure operation for concentrating high-saline feedwater.

- **Ultrapure RO Membrane Component UE Series**

The Ultrapure RO Membrane Component (UE Series) is developed for ultrapure water preparation with excellent TOC removal and low TOC dissolving-out.

- **Anti-fouling RO Membrane Component FR Series**

The Anti-fouling RO Membrane Component (FR Series) uses a special manufacturing process to improve membrane surface hydrophilicity and roughness.

- **LP Series and ULP series**

The Low and Ultra-low Pressure RO Membrane Component offer a low-pressure operation, high water production, good desalination performance.

- **Low Energy Consumption RO Membrane Component XLE Series**

The Low Energy Consumption RO Membrane Component (XLE Series) is suitable for low salt water sources with low-pressure membranes.

- **Anti-oxidant RO Membrane Component HOR Series**

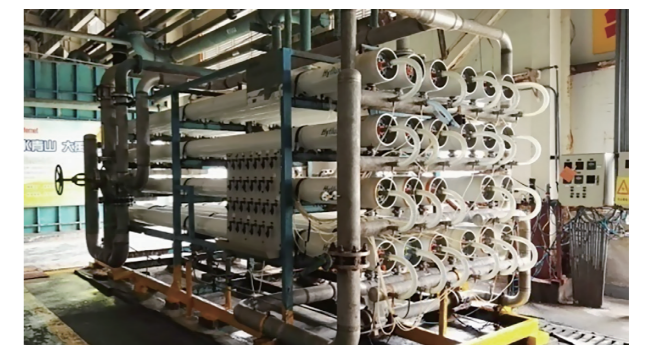
The Anti-oxidant RO Membrane Component (HOR Series) is a polyamide RO membrane, allowing direct fungicide addition for complete bacteria-free status.

- **RO Membrane Component SW Series for Seawater Desalination**

The RO Membrane Component for Seawater Desalination (SW Series) balances desalination rate and water production through precise control, suitable for various seawater desalination projects.

- **Hot Disinfection RO Membrane SHD Series**

The Hot Disinfection RO Membrane (SHD Series) is developed for pasteurization in food and pharmaceutical industries.



# Product+ Membrane Component



## Nanofiltration Membrane Components

Nanofiltration membrane components are primarily used for water treatment and material separation.

- **Municipal NF Membrane Component Tapurim Series**

The Municipal NF Membrane Component (Tapurim Series), which removes organic matter, microorganisms, viruses, and most divalent and above metal ions while

retaining some monovalent ions. This series has obtained the Hygiene License Approval for Drinking Water Hygiene and Safety.

- **Material Separation NF Membrane Component MASE Series**

The Material Separation NF Membrane Component (MASE Series) is mainly used for the separation, hardness removal, and denitrification of monovalent and divalent

salts in aqueous solutions, and for the separation and concentration of liquid materials, with a molecular weight cutoff of 200-800 daltons.

- **High Pressure NF Membrane Component MASE 80 Series**

The High Pressure NF Membrane Component (MASE 80 Series) is suitable for the purification, separation, and

concentration of high concentration saltwater, with an operating pressure of up to 80 bar.

- **Acid Resistant NF Membrane Component Acidstab NF Series**

The Acid Resistant NF Membrane Component (Acidstab NF Series) is used for separating metal ions

and inorganic salts in acid solutions for purification and recovery.

- **Alkali Resistant NF Membrane Component Alkalistab NF Series**

The Alkali Resistant NF Membrane Component (Alkalistab NF Series) is suitable for treating solutions

with pH 5~14 and can perform stable separation in strong alkaline solutions such as 20% (ω/%) NaOH and KOH.

## Ultrafiltration Membrane Components

The document describes three types of ultrafiltration membrane components.

- **MSEP-UF Series Roll Type UF Membrane Component**

The SEP-UF Series Roll Type UF Membrane Component, primarily used for the separation and concentration of specific materials, available with various

molecular weight cut-offs and inlet grid options, with choices of conventional fiberglass or sanitary shells.

- **SMR Series Flat UF Membrane Component**

The SMR Series Flat UF Membrane Component consists of a filter membrane, guide cloth, and guide

plate, utilizing a porous polyvinyl chloride filter membrane with a pore size of 0.1μm.

- **SEP-UF Series Hollow Fiber Pressure UF Membrane Component**

The SEP-UF Series Hollow Fiber Pressure UF Membrane Component is mainly used to remove suspended solids, colloids, microorganisms,

macromolecular organic compounds, bacteria, and viruses from aqueous solutions, finding wide application in purification treatments.



# Overseas + Projects



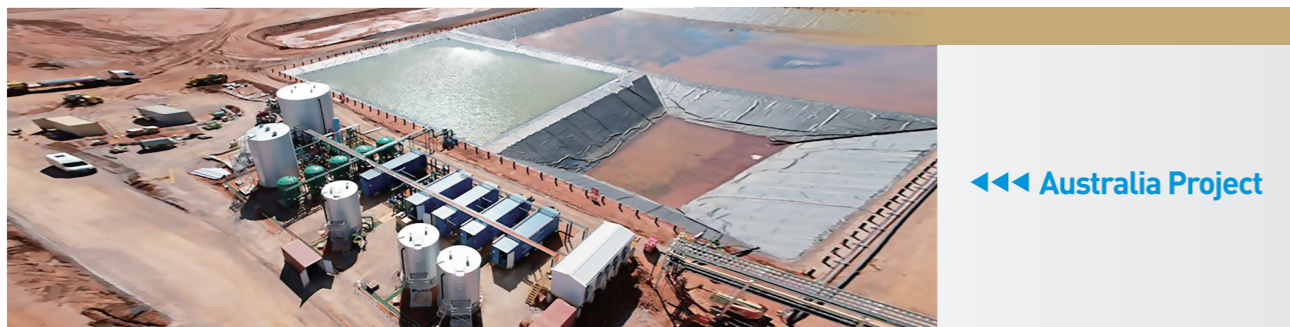
▶▶▶ Serbia Project



◀◀◀ Democratic Republic of the Congo



▶▶▶ Colombia Project



◀◀◀ Australia Project

# Main + Customers

